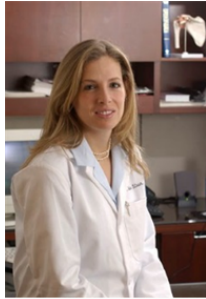


CURRICULUM VITAE

Beth E. Shubin Stein, MD



Department of Sports Medicine & Shoulder Surgery
Hospital for Special Surgery
535 East 70th Street
New York, NY 10021
(212) 606-1752 (212) 606-1424 (fax)

EDUCATION

Doctor of Medicine Columbia College of Physicians and Surgeons, Columbia University New York, NY	1996
Bachelor of Arts Columbia College, Columbia University New York, NY	1991

INTERNSHIP AND RESIDENCY

Orthopaedic Surgery Sports Medicine & Shoulder Fellowship Hospital for Special Surgery New York, NY	2001–2002
Orthopaedic Surgery Residency New York Orthopaedic Hospital Columbia-Presbyterian Medical Center, New York, NY	1997–2001
General Surgery Internship Columbia-Presbyterian Medical Center, New York, NY	1995–1996

EXPERIENCE

UNIVERSITY APPOINTMENTS

Weill Medical College, Cornell University New York, NY	
<i>Associate Professor Orthopaedic Surgery</i>	2013-present
<i>Assistant Professor Orthopaedic Surgery</i>	2006-2013
<i>Instructor, Orthopaedic Surgery</i>	2002-2006

HOSPITAL APPOINTMENTS

Associate Attending Orthopaedic Surgery New York Presbyterian Hospital, New York Hospital Campus New York, NY	2013–present
Assistant Attending Orthopaedic Surgery New York Presbyterian Hospital, New York Hospital Campus New York, NY	2002–2013
Director of the Patellofemoral Center Hospital for Special Surgery New York, NY	2016-present
Associate Attending Orthopaedic Surgery Hospital for Special Surgery New York, NY	2013–present
Assistant Attending Orthopaedic Surgery Hospital for Special Surgery New York, NY	2002–2013

LICENSURE

New York
Connecticut

CERTIFICATION

American Board of Orthopaedic Surgery	2005
American Board of Orthopaedic Surgery, Certificate of Added Qualification in Orthopaedic Sports Medicine	2007

PROFESSIONAL ACTIVITIES

<i>Arthroscopy</i> , Reviewer	1/2005–2010
<i>Journal of the American Academy of Orthopaedic Surgeons</i> , Reviewer	1/2006–Present
<i>American Journal of Sports Medicine</i> , Reviewer	1/2009–Present

Professional Societies

American Orthopaedic Society for Sports Medicine	
Member	7/2002-Present
Fellowship Education Committee	2017-2020
Nominating Committee	2017-2018
Program Committee	7/2011–2016
Program Chair	1/2014–12/2014

American Academy of Orthopaedic Surgeons

Member 8/2002-Present

Arthroscopy Association of North America

Member 7/2002–2010

Perry Outreach Program, Instructor and Speaker 4/2011-Present

Crutches for Kids Board Member 2010-Present
(A not for profit organization creating a worldwide network that brings crutches to kids in need.)Alexandra's Playground 2008-Present
(A not for profit corporation building playgrounds in underserved communities, aimed at creating opportunities for safe, active play through childhood.)**Team Physician and Event Coverage**

Team Physician, New York Magic—Semi-Pro Women's Soccer 8/2001–5/2004

Team Physician, New York Power—Pro Women's Soccer 8/2002–7/2003

Team Physician, US Women's Tennis—Federation Cup 11/2003-2006

Assistant Team Physician, WNBA New York Liberty 5/2005-2007

Hospital and University Activities

Ambulatory Surgery Committee 2014- present

HSS Ambulatory Surgery Center Board of Directors 2015- present

PUBLICATIONS**Abstract Award Presentations**

1. **AOSSM Fellow Research Award** –Annual Meeting 2016- Anisometry of Medial Patellofemoral Ligament Reconstruction in the Setting of Patella Alta and Increased Tibial Tubercle – Trochlear Groove (TT-TG) Distance Lauren H. Redler MD, Kathleen N. Meyers MS, Jacqueline Munch MD, Elizabeth R. Dennis MD, Joseph Nguyen MPH , **Beth E. Shubin Stein MD**
2. **AANA Patellofemoral Anatomy Research Excellence Award** -Annual Meeting 2016- Anisometry of Medial Patellofemoral Ligament Reconstruction in the Setting of Patella Alta and Increased Tibial Tubercle – Trochlear Groove (TT-TG) Distance Lauren H. Redler MD, Kathleen

N. Meyers MS, Jacqueline Munch MD, Elizabeth R. Dennis MD, Joseph Nguyen MPH, **Beth E. Shubin Stein MD**

3. **AANA Patellofemoral Anatomy Research Excellence Award-** ANNUAL MEETING 2015-MRI Measurements Associated with Patellofemoral Instability. Jacqueline Munch MD, Jarron Sullivan MD, Daniel Green MD, Douglas Mintz MD, Sabrina Strickland MD, **Beth Shubin Stein MD**

Grants

1. Surgeon in Chief. Patellofemoral Redislocation Prediction Model. \$20,000. 2017
2. University of Cincinnati Faculty Grant. JUPITER project. \$15,000. 2017
3. AANA Research Grant. JUPITER project. \$25,000. 2016
4. POSNA Research Grant. JUPITER project. \$25,000. 2016
5. Surgeon in Chief. JUPITER project. \$20,000. 2016
6. The Arthritis Foundation, Use of Botox in Rotator Cuff Repair-an Animal Study, \$50,000. 2006

Peer Reviewed Scientific Journal Articles

1. Johnson AA, Wolfe EL, Mintz DN, Demehri S, **Shubin Stein BE**, Cosgarea AJ. Complications after tibial tuberosity osteotomy: associations with screw size and concomitant distalization. *Orthop J Sports Med.* 2018;in press
2. Liu JN, Wu HH, Garcia GH, Kalbian IL, Strickland SM, **Shubin Stein BE.**, Return to Sports After Tibial Tubercle Osteotomy for Patellofemoral Pain and Osteoarthritis, *Arthroscopy.* 2018 April;34(4): 1022-1029.
3. Liu JN, Brady JM, Kalbian IL, Strickland SM, Ryan CB, Nguyen JT, **Shubin Stein BE.**, Clinical Outcomes After Isolated Medial Patellofemoral Ligament Reconstruction for Patellar Instability Among Patients with Trochlear Dysplasia, *Am J Sports Med.* 2018 Mar;46(4): 883-889.
4. Redler LH, Meyers KN, Brady JM, Dennis ER, Nguyen JT, **Shubin Stein BE.**, Anisometry of Medial Patellofemoral Ligament Reconstruction in the Setting of Increased Tibial Tubercle-Trochlear Groove Distance and Patella Alta, *Arthroscopy.* 2018 Feb;34(2):502-510.
5. Liu JN, Mintz DN, Nguyen JT, Brady JM, Strickland SM, **Shubin Stein BE**, Magnetic Resonance Imaging Validation of Tibial Tubercle Transfer Distance in the Fulkerson Osteotomy: A Clinical and Cadaveric Study, *Arthroscopy.* 2018 Jan;34(1):189-197.
6. **Shubin Stein BE**, Brady JM, Grawe B, Tuakli-Wosornu Y, Nguyen JT, Wolfe E, Voigt M, Mahony G, Strickland S., Return to Activities after Patellofemoral Arthroplasty, *Am J Orthop* 2017 Nov/Dec; 46(6): E353-E357.
7. Brady JM, Sullivan JP, Nguyen J, Mintz D, Green DW, Strickland S, **Shubin Stein BE**, The Tibial Tubercle-to-Trochlear Groove Distance is Reliable in the Setting of Trochlear Dysplasia, and Superior to the Tibial Tubercle-to-Posterior Cruciate Ligament Distance When Evaluating Coronal Malalignment in Patellofemoral Instability. *Arthroscopy.* 2017 Nov;33(11):2026-2034.
8. Christ AB, Baral E, Koch C, **Shubin Stein BE**, Gonzalez Della Valle A, Strickland SM, Patellofemoral arthroplasty conversion to total knee arthroplasty: Retrieval analysis and clinical correlation, *Knee.* 2017 Oct;24(5):1233-1239.

9. Liu JN, Steinhaus ME, Kalbian IL, Post WR, Green DW, Strickland SM, **Shubin Stein BE**, Patellar Instability Management: A Survey of the International Patellofemoral Study Group. *Am J Sports Med*, 2017 Oct 1.
10. Grawe B, Burge A, Nguyen J, Strickland S, Warren R, Rodeo S, **Shubin Stein B**, Cartilage Regeneration in Full-Thickness Patellar Chondral Defects Treated with Particulated Juvenile Articular Allograft Cartilage: An MRI Analysis., *Cartilage*. 2017 Oct;8(4):374-383
11. Nwachukwu BU, So C, Schairer WW, **Shubin-Stein BE**, Strickland SM, Green DW, Dodwell ER, Economic Decision Model for First-Time Traumatic Patellar Dislocations in Adolescents. *Am J Sports Med* 2017 Aug;45(10):2267-2275.
12. Munch JL, Sullivan JP, Nguyen JT, Mintz D, Green DW, **Shubin Stein BE**, Strickland S. Patellar Articular Overlap on MRI Is a Simple Alternative to Conventional Measurements of Patellar Height., *Orthopaedic Journal of Sports Medicine* 2016 4:23
13. Weber AE, Nathani A, Dines JS, Allen AA, **Shubin Stein BE**, Arendt EA, Bedi A. An Algorithmic Approach to the Management of Recurrent Lateral Patellar Dislocation. *J Bone Joint Surg Am*. 2016 Mar 2;98(5):417-27.
14. Gausden EB, Fabricant PD, Taylor SA, McCarthy MM, Weeks KD, Potter H, **Shubin Stein B**, Green DW. Medial Patellofemoral Reconstruction in Children and Adolescents. *JBJS Rev*. 2015 Oct 13;3(10).
15. Stupay KL, Swart E, **Shubin Stein BE**. Widespread Implementation of Medial Patellofemoral Ligament Reconstruction for Recurrent Patellar Instability Maintains Functional Outcomes at Midterm to Long-Term Follow-up While Decreasing Complication Rates: A Systematic Review. *Arthroscopy*, 2015 Feb 19.
16. Tanaka MJ, Munch JL, Slater AJ, Nguyen JT, **Shubin Stein BE**. Incidence of Deep Venous Thrombosis After Tibial Tubercle Osteotomy: A Single Case Series Study. *Orthop J Sports Med*. 2014 Aug 13;2(8)
17. Franzone JM, Vitale MA, **Shubin Stein BE**, Ahmad CS. Is there an association between chronicity of patellar instability and patellofemoral cartilage lesions? An arthroscopic assessment of chondral injury. *J Knee Surg*. 2012 Nov;25(5):411-6
18. Hettrich CM, Rodeo SA, Hannafin JA, Ehteshami J, **Shubin Stein BE**. The effect of muscle paralysis using Botox on the healing of tendon to bone in a rat model. *J Shoulder Elbow Surg*. 2010 Dec 29.
19. Ahmad CS, Brown GD, **Stein BS**. The docking technique for medial patellofemoral ligament reconstruction: surgical technique and clinical outcome. *Am J Sports Med*. 2009 Oct;37(10):2021-7.
20. Ahmad CS, McCarthy M, Gomez JA, **Shubin Stein BE**. The moving patellar apprehension test for lateral patellar instability. *Am J Sports Med*. 2009 Apr;37(4):791-6.
21. Levine WN, Brandon ML, **Shubin Stein BS**, Gardner TR, Bigliani LU, Ahmad CS. Shoulder adaptive changes in youth baseball players. *J Shoulder Elbow Surg*. 2006 Sep-Oct;15(5):562-6
22. MacGillivray JD, **Shubin Stein BE**, Park M, Allen AA, Wickiewicz TL, Warren RF: Comparison of tibial inlay versus trans-tibial techniques for isolated PCL reconstruction: Minimum two-year follow up. *Arthroscopy*. 2006 Mar;22(3):320-8.

23. **Shubin Stein BE**, Ahmad CS, Pfaff C, Bigliani LU, Levine WN: A Comparison of MRI findings of the acromioclavicular joint in symptomatic versus asymptomatic patients. *Journal of Shoulder and Elbow Surgery*. 2006 (Jan-Feb).
24. **Shubin Stein BE**, Wiater MJ, Pfaff CH, Bigliani LU, Levine WN: Detection of acromioclavicular joint pathology in asymptomatic shoulders using magnetic resonance imaging. *Journal of Shoulder and Elbow Surgery*. 2001 May-June; 10(3):204-8.
25. Ahmad CS, **Shubin Stein BE**, Jeshua W, Nercessian OA, Henry JH: Anterior cruciate ligament function after tibial eminence fracture in skeletally mature patients. *American Journal of Sports Medicine*. 2001 May-June; 29(3):339-45.
26. Ahmad CS, **Shubin Stein BE**, Matusse D, Henry JH: Immediate surgical repair of the medial patellar stabilizers for acute patellar dislocation. A review of eight cases. *American Journal of Sports Medicine* 2000 Nov-Dec; 28(6): 804-810.
27. **Shubin Stein BE**, Rosenwasser MP: Treatment of a traumatic osteochondral defect in the thumb carpometacarpal joint with a periosteal autograft. *The Journal of Hand Surgery* 1999 Nov;24A(6):1225-1230.
28. Miller TT, **Shubin Stein BE**, Staron RB, Feldman F: Relationship of the menisiofemoral ligaments of the knee to lateral meniscus tears: MRI evaluation. *American Journal of Orthopaedics* 1998 Nov;27(11): 729-732.

Reviews, Techniques, Editorials, Letters

1. Brady JM, Rosencrans AS, **Shubin Stein BE**, Use of TT-PCL versus TT-TG, *Current Reviews in Musculoskeletal Medicine*, 2018 May 8 [Epub ahead of print].
2. **Shubin Stein BE**, Gruber S, Brady JM, MPFL in First-Time Dislocators, *Current Reviews in Musculoskeletal Medicine*, 2018 April 23. [Epub ahead of print].
3. Grawe B, **Shubin Stein BE**, Tibial Osteotomy: Indication and Techniques, *J Knee Surg*. 2015 Aug;28(4):279-84
4. Li X, Nielsen NM, Zhou H, **Stein BS**, Shelton YA, Busconi BD. Surgical treatment of a chronically fixed lateral patella dislocation in an adolescent patient. *Orthop Rev* 2013 June 10;5(2):45-47
5. **Shubin Stein BE**. Commentary on Patellofemoral Section. Sports Medicine 2. Instructional Course Lectures Sports Medicine Specialty Volume 2: *American Academy of Orthopaedic Surgeons*, Illinois, 2011
6. Boselli K, Bowers A, **Shubin Stein B**, Ahmad CS: Medial Patellofemoral Ligament Reconstruction: Docking Technique, *Operative Techniques in Sports Medicine*: Ahmad and **Shubin Stein**, Guest Editors: Elsevier, Illinois, 18: 98-106, 2010
7. Bowers A, **Shubin Stein B**: Complications of Patellar Stabilization Surgery; *Operative Techniques in Sports Medicine*: Ahmad and **Shubin Stein**, Guest Editors: Elsevier, Illinois, 18:98-106, 2010
8. **Shubin Stein BE**, Ahmad CS: The Management of Patellar Instability in Skeletally Immature Patient. *Operative Techniques in Orthopaedics*, 17:250-256, 2007

Textbooks/ Guest Editorship

1. **Shubin Stein BE**, Guest Editor: Patellar Instability. *Operative Techniques in Sports Medicine*. Elsevier, Illinois. Vol 18, pp 61-128, 2010

Books/Book Chapters/Reviews

1. Grawe B, Munch J, **Shubin Stein BE**. Technique: Distal Realignment Tibial Tubercle Osteotomy. Pediatric and Adolescent Knee Surgery. Cordasco F, Green D Editors. Wolters Kluwer 2015
2. Tanaka M, Robertson C, **Shubin Stein BE**. Upper Extremity Injuries. Women's Sports Injuries. Templeton, Editor. American Academy of Orthopaedic Surgeons, Illinois, 2013
3. Endo Y, **Shubin Stein BE**, and Potter HG: Radiologic Assessment of Patellofemoral Pain in the Athlete. *Sports Health: A Multidisciplinary Approach*. 2011 March; 3:195-210
4. **Shubin Stein BE**, Athletic Conditions of the Shoulder, *American Academy of Orthopaedic Surgeons. Comprehensive Orthopaedic Review*: Lieberman, Editor. American Academy of Orthopaedic Surgeons, Illinois, 2009
5. **Shubin Stein BE**, Jackson K. Arthroscopic posterior instability repair. In: Levine WN, Blaine TA, Ahmad CS, eds. *Minimally Invasive Shoulder and Elbow Surgery*: Marcel-Dekker Publishing, 2007
6. **Shubin-Stein BE**, Ahmad CS: Patellofemoral Disorders, *Sports Medicine*: Schepsis A, Editor: Lippincott Williams & Wilkins, Maryland, 2005
7. **Shubin Stein BE**, Williams RJ III. Fresh Osteochondral Allograft Transplantation for the Treatment of Hyaline Cartilage Defects: Is this a Viable Surgical Alternative? Controversies in Knee Surgery. November, 2004
8. **Shubin Stein BE**, Craig EV. Atlas of Orthopaedic Surgery. A Guide to Management and Practice. Parthanon Publishing, London and New York, 2004.
9. **Shubin Stein BE**, Potter H, Wickiewicz TL: Repair of chronic pectoralis major rupture. *Techniques in Shoulder and Elbow Surgery*. September 2002.
10. **Shubin Stein BE**, Williams RJ, Wickiewicz TL: Arthritis and osteotomies in anterior cruciate ligament reconstruction. *Ortho Clin North Am*. 34 (2003) 169-181.

Scientific Sessions and Instructional Courses

1. ICL 302 AOSSM Annual Meeting, Patella Instability: How to Fix It and How to Avoid Complications, San Diego, CA, July 2018
2. AOSSM Annual Meeting, AMZ/MPFL Reconstruction, Knee Video Demonstration, San Diego, CA, July 2018.

3. AOSSM Annual Meeting, Paper 122: Isolated Medial Patellofemoral Ligament Reconstruction for Patellar Instability Regardless of the Tibial Tubercle Trochlear Groove Distance: Outcomes at 1 and 2 years, Joseph Nguyen MPH, Katelyn Gasik, Jaqueline Brady, MD, **Beth Shubin Stein MD**, San Diego, CA, July 2018.
4. AOSSM Annual Meeting, Unstable Patella and Open Growth Plates: What to Do, San Diego, CA, July 2018.