

CURRENT CONCEPTS REVIEW

An Algorithmic Approach to the Management of Recurrent Lateral Patellar Dislocation

Alexander E. Weber, MD, Amit Nathani, MD, Joshua S. Dines, MD, Answorth A. Allen, MD, Beth E. Shubin-Stein, MD, Elizabeth A. Arendt, MD, and Asheesh Bedi, MD

Investigation performed at Sports Medicine and Shoulder Service, MedSport, Department of Orthopaedic Surgery, University of Michigan, Ann Arbor, Michigan

- High-level evidence supports nonoperative treatment for first-time lateral acute patellar dislocations.
- Surgical intervention is often indicated for recurrent dislocations.
- Recurrent instability is often multifactorial and can be the result of a combination of coronal limb malalignment, patella alta, malrotation secondary to internal femoral or external tibial torsion, a dysplastic trochlea, or disrupted and weakened medial soft tissue, including the medial patellofemoral ligament (MPFL) and the vastus medialis obliquus.
- MPFL reconstruction requires precise graft placement for restoration of anatomy and minimal graft tension. MPFL reconstruction is safe to perform in skeletally immature patients and in revision surgical settings.
- Distal realignment procedures should be implemented in recurrent instability associated with patella alta, increased tibial tubercle-trochlear groove distances, and lateral and distal patellar chondrosis.
- Groove-deepening trochleoplasty for Dejour type-B and type-D dysplasia or a lateral elevation or proximal recession trochleoplasty for Dejour type-C dysplasia may be a component of the treatment algorithm; however, clinical outcome data are lacking. In addition, trochleoplasty is technically challenging and has a risk of substantial complications.

Peer Review: This article was reviewed by the Editor-in-Chief and one Deputy Editor, and it underwent blinded review by two or more outside experts. The Deputy Editor reviewed each revision of the article, and it underwent a final review by the Editor-in-Chief prior to publication. Final corrections and clarifications occurred during one or more exchanges between the author(s) and copyeditors.

The average annual incidence of primary patellar dislocation has been reported to be 5.8 cases per 100,000, and the rate is higher for younger and more active populations¹⁻³. Dislocations can lead to articular cartilage injuries, osteochondral fractures, recurrent instability, pain, decreased activity, and patellofemoral arthritis^{1,2,4-8}. Recurrence has been reported to

range from 15% to 80%^{1,9,10}. After a second dislocation, the chance of continued episodes of patellofemoral instability is >50%^{1,4}.

Recurrent lateral patellar dislocation is a multifactorial problem as patellar stability relies on limb alignment, the osseous structure of the patella and trochlea, and the integrity

Disclosure: None of the authors received payments or services, either directly or indirectly (i.e., via his or her institution), from a third party in support of any aspect of this work. One or more of the authors, or his or her institution, has had a financial relationship, in the thirty-six months prior to submission of this work, with an entity in the biomedical arena that could be perceived to influence or have the potential to influence what is written in this work. No author has had any other relationships, or has engaged in any other activities, that could be perceived to influence or have the potential to influence what is written in this work. The complete **Disclosures of Potential Conflicts of Interest** submitted by authors are always provided with the online version of the article.

of static and dynamic soft-tissue constraints. The management of recurrent patellar instability is difficult for a number of reasons, including a heterogeneous patient population, a variety of technically challenging surgical techniques, and a lack of long-term and robust clinical outcome studies. The objective of this review was to provide an algorithmic guideline for treatment that may be applied in an individualized manner (Fig. 1).

Clinical Evaluation

The clinician should begin with a detailed history of the dislocation events. The age, skeletal maturity, sex, and overall activity level of the patient; the activity and position of the knee at the time of dislocation; and previous dislocation events should be carefully documented. Ongoing symptoms of pain should be localized and differentiated from weakness and instability. All prior treatments, including bracing, physical therapy, and surgery, should be reviewed. It is important to understand the patient's expectations for the return to sports, particularly for an in-season athlete.

General ligamentous laxity is assessed with the Beighton hypermobility score¹¹. A valgus appearance on standing often results from limb alignment abnormalities, including increased femoral anteversion, hyperpronation of the foot, or external tibial torsion. This constellation of anatomic variances was termed "miserable malalignment" syndrome by James et al.¹² and is often associated with patellar instability. Instability may manifest dynamically because of muscle imbalance or weak

musculature¹³. A valgus thrust can generate an external rotation moment about the knee with laterally directed force across the patella¹⁴. The vastus medialis obliquus bulk should be evaluated and quantified. Range of motion and lower-extremity strength should be compared bilaterally. A palpable defect along the medial retinaculum or medial patellofemoral ligament (MPFL) may be appreciable. Tenderness over the MPFL origin, the so-called Bassett sign, is consistent with a ligamentous disruption^{15,16}. Patellar tracking should be examined and a J sign noted¹⁷. Lateral glide of three quadrants of the patellar width is consistent with hypermobility but must be accompanied by apprehension and asymmetry compared with the contralateral side¹⁴. The moving patellar apprehension test as described by Ahmad et al.¹⁸ is the most sensitive and specific for patellar instability.

Diagnostic Imaging

Imaging for recurrent patellar instability should begin with radiography. Standard anteroposterior weight-bearing radiographs of both knees and posteroanterior weight-bearing radiographs made with the knee at 45° of flexion aid in the assessment of the coronal alignment of the tibiofemoral joint and the presence of arthrosis. Standing long-leg anteroposterior radiographs should be made if there is any concern for coronal malalignment. The true lateral radiograph in 30° of knee flexion provides information regarding trochlear morphology, patellar height, patellar tilt, and the presence of arthrosis¹⁹. Numerous methods are available for measuring

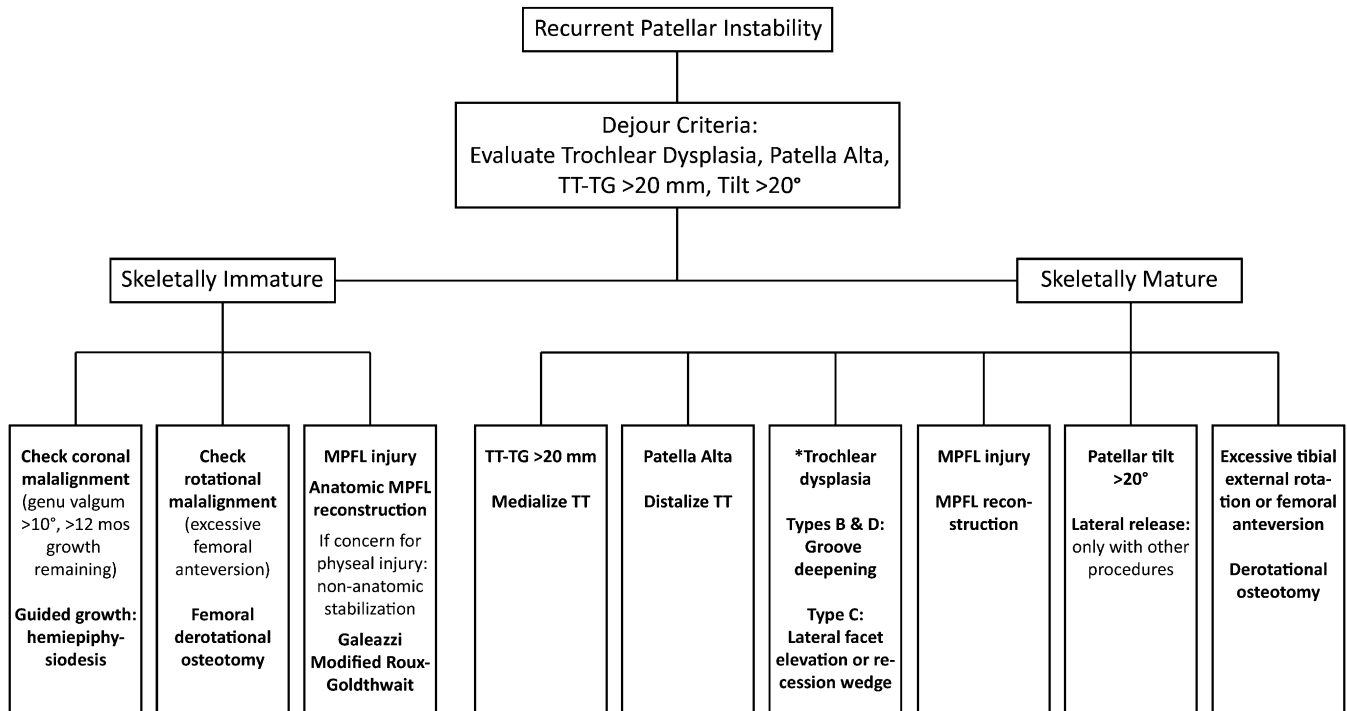


Fig. 1
An algorithmic approach for the treatment of recurrent patellar instability. The asterisk indicates that caution should be exercised when trochleoplasty is being considered, given the technical challenges and controversial clinical outcomes.

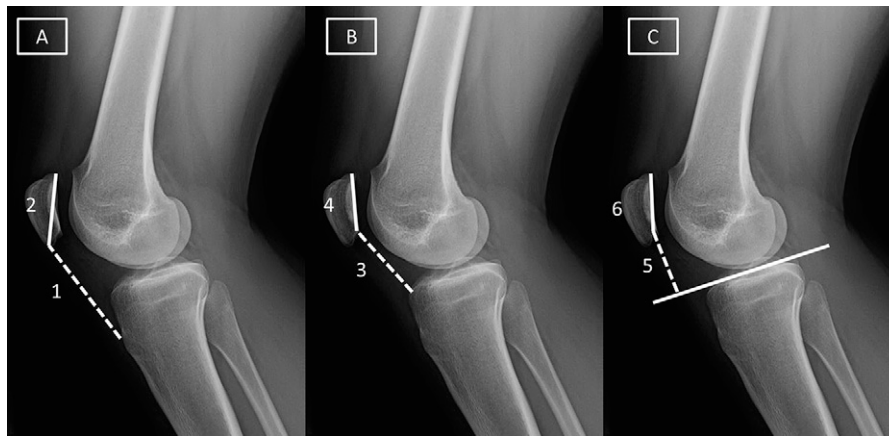


Fig. 2

Figs. 2-A, 2-B, and 2-C Representative radiographs with the indices for measurement of patellar height^{19,20}. **Fig. 2-A** The Insall-Salvati index is calculated by dividing the length of line 1 by the length of line 2. **Fig. 2-B** The Caton-Deschamps index is calculated by dividing the length of line 3 by the length of line 4. **Fig. 2-C** The Blackburn-Peel index is calculated by dividing the length of line 5 by the length of line 6.

patella alta^{19,20} (Fig. 2). True lateral radiographs may also identify trochlear dysplasia by the crossing sign, evidence of a supratrochlear spur, and a double contour, which denotes a hypoplastic medial condyle. The aforementioned trochlear findings were elucidated by Dejour and Le Coultre and were subsequently revised to create the trochlear dysplasia classification system^{21,22} (Fig. 3). The Merchant view, made with the knee flexed 45° and the beam inclined 30° distally²³, is used to assess patellar tilt, patellar subluxation, and trochlear dysplasia.

In general, cross-sectional imaging is used for recurrent dislocations and/or once the decision is made to pursue operative interventions. In pediatric patients, the threshold for advanced imaging may be lower as osteochondral injury that is amenable to fixation occurs frequently after acute patellar dislocations²⁴. High-resolution, axial, computed tomographic (CT) images may more accurately characterize the morphology of the trochlea and assess femoral and tibial torsion. If there is concern about the risk of radiation exposure with CT scanning,

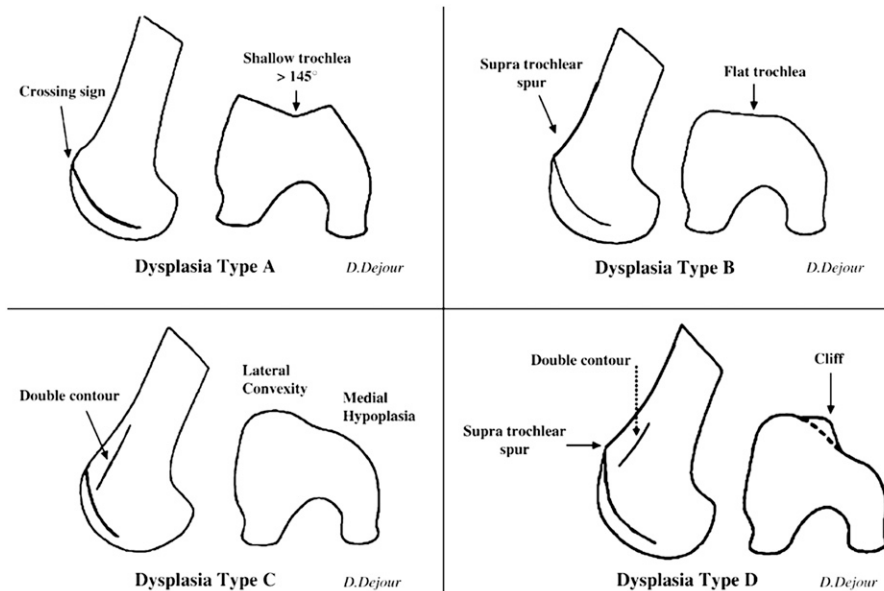


Fig. 3

Dejour classification of trochlear dysplasia²¹. Type A indicates the presence of the crossing sign with a shallow trochlea of >145°. Type B indicates the presence of a supratrochlear spur and a flat or convex trochlea. Type C indicates the presence of a double contour sign with a hypoplastic medial femoral condyle. Type D indicates the presence of a supratrochlear spur and a double contour sign with a cliff pattern between condyles. (Reproduced, with permission of Lippincott Williams & Wilkins, from: Dejour D, Le Coultre B. Osteotomies in patello-femoral instabilities. *Sports Med Arthrosc*. 2007 Mar; 15[1]:39-46.)

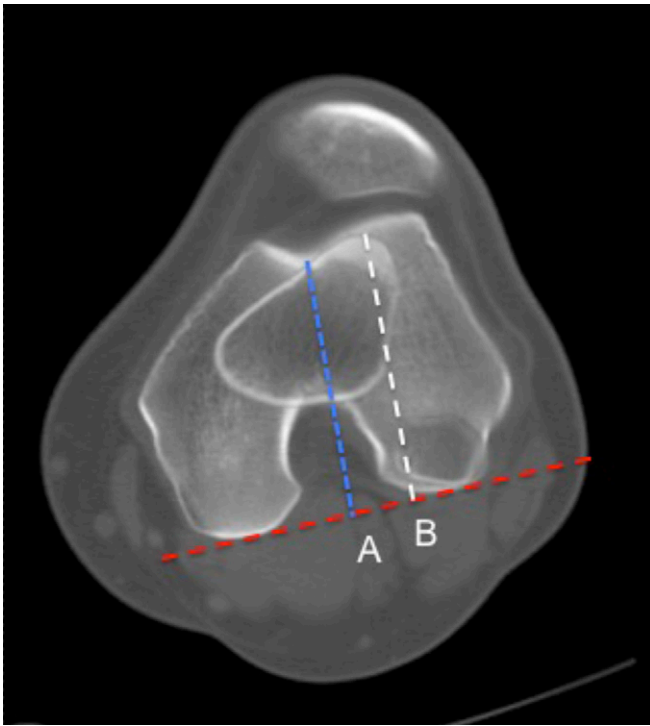


Fig. 4
Superimposed CT axial scans of the trochlear groove and the tibial tubercle demonstrating measurement of the TT-TG distance. Line A denotes the perpendicular to the deepest portion of the trochlear groove, and line B denotes the prominence of the tibial tubercle. The TT-TG measurement is the distance between lines A and B.

magnetic resonance imaging (MRI) will often suffice. Relative rotation is assessed via measurement of the tibial tubercle-trochlear groove (TT-TG) distance, which averages 8 to 10 mm in pediatric and adult patients as measured by CT or MRI (Fig. 4)²⁵⁻²⁷. A TT-TG distance of ≥ 20 mm is highly associated with patellar instability^{25,28}.

MRI is most useful for evaluating the soft-tissue restraints of the patellofemoral joint and the chondral surfaces. Standard MRI was compared with intraoperative findings and was found to be 85% sensitive and 70% accurate in detecting injury to the MPFL²⁹. Studies have suggested that the MPFL is predominantly disrupted at the femoral origin, and thus the medial femoral condyle should be carefully evaluated for signs of acute or chronic changes associated with MPFL disruption^{8,29-32}. With MPFL injury, adjacent soft-tissue damage, such as edema within the overlying vastus medialis obliquus or elevation of the vastus medialis obliquus off the medial femoral condyle, may also indicate injury^{29,30}. Following acute injury, MRI can detect characteristic findings of a patellar dislocation, including cartilage damage that may be undetected on radiographs or bone bruising on the medial patellar facet and the lateral femoral condyle^{24,33,34}. Concomitant cartilage injuries to the patellofemoral joint can be expected in 70% to 96% of knees with both acute and recurrent patellar dislocations^{30,35-37}. MRI may also be used to assess patellar height by means of the

patellotrochlear index³⁸, calculated as a ratio of trochlear articular cartilage to patellar articular cartilage on the MRI sagittal slice at the midline of the knee with the leg in extension. Values of $<12.5\%$ and $>50\%$ indicate patella alta and patella baja, respectively. The patellotrochlear index may be a more clinically relevant tool to measure patellar height in patients with trochlear dysplasia³⁹. MRI-based estimates of TT-TG distance have been shown to underestimate the distance by an average of 3.8 mm compared with CT-based estimates⁴⁰. Lastly, recent findings have suggested that trochlear dysplasia may be more accurately and reproducibly described as high grade versus low grade on MRI rather than by the Dejour classification on lateral radiographs^{41,42}.

Treatment

Nonoperative Management

High-level evidence supports nonoperative treatment for first-time lateral acute patellar dislocations¹⁰. There is also a role for physical therapy and nonoperative modalities in recurrent patellar instability if patients are informed of the redislocation risk and are within a sporting season with a desire to continue to participate. Therapy should consist of bracing or McConnell taping and gradual resumption of full motion and strength before the return to play^{43,44}. Hinged knee braces or lateral stabilization braces may enhance the patient's sense of stability^{45,46}. Physical therapy should focus on strengthening the vastus medialis obliquus and gluteal musculature in order to improve patellar stability⁴⁴. However, most authors agree that the common indications for operative intervention are failure to improve with nonoperative treatment or recurrent patellar instability with (or without) secondary and progressive osteochondral injury^{45,47-49}. Atkin et al.⁵⁰ reviewed their results at six months after nonoperative management and noted that, following an initial patellar dislocation, 58% of patients continued to have limitations with strenuous activity and 55% had not returned to sports.

MPFL Reconstruction

The most important restraint to lateral patellar displacement from 0° to 30° of flexion is the MPFL⁵¹⁻⁵³. One advantage of reconstruction rather than repair is replacement of the torn or stretched ligament with a collagen-containing graft rather than imbrication of stretched or compromised tissues. Comparing MPFL reconstruction techniques, graft choice, graft positioning, or graft tension is difficult, given the paucity of clinical comparative studies. Furthermore, the procedure requires technical refinement as complication rates as high as 26% have been reported⁵⁴.

The femoral attachment of the MPFL has received much more scrutiny than the patellar attachment^{55,56}. Given the precision necessary to appropriately place the femoral tunnel, our group has advocated for femoral tunnel position localization with anatomic landmarks followed by graft isometry and lastly with confirmation with radiographic parameters⁵⁶⁻⁵⁹. Recent studies have suggested that femoral tunnel malposition may result in graft anisometry, leading to graft laxity and ultimately

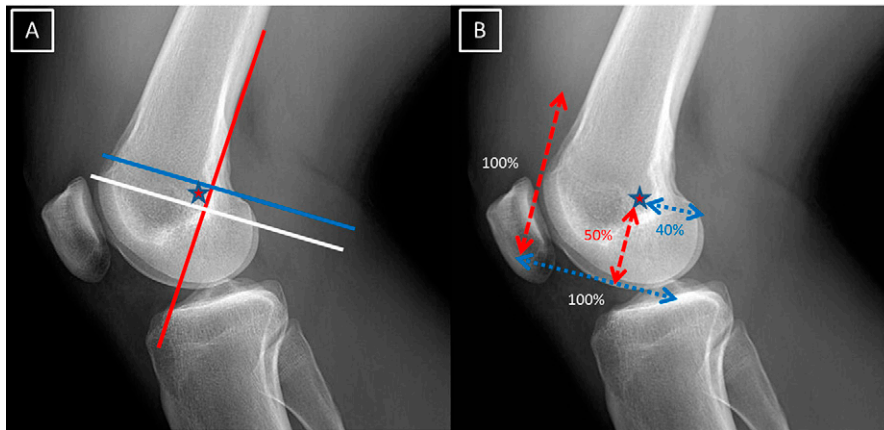


Fig. 5

Figs. 5-A and 5-B Medial patellofemoral ligament (MPFL) femoral origins are based on the Schöttle point and normalized dimensions. **Fig. 5-A** The Schöttle point (star)⁵⁹ is 1 mm anterior to the tangent of the posterior femoral cortex (red line), 2.5 mm distal to the perpendicular of the superior border of the femoral condyle (blue line), and immediately proximal to a perpendicular line from the superoposterior aspect of the Blumensaat line (white line). **Fig. 5-B** Normalized dimensions⁵⁶: when the anterior-to-posterior diameter of the medial femoral condyle is considered to be 100% horizontally and the superior-to-inferior distance from the superior articular border of the patella to distal border of the femoral condyle is considered to be 100% longitudinally, then the MPFL femoral attachment site is 40% from the posterior, 50% from the distal, and 60% from the anterior borders of the medial femoral condyle (star).

early failure or excessive patellofemoral compression forces and ultimately arthrosis^{55,60-67}. A femoral tunnel placed too far proximally may also lead to graft laxity in extension and excessive graft tension in flexion, which manifests clinically as anterior knee pain and loss of flexion⁶⁷. Ultimately, repetitive flexion will attenuate the graft and lead to early failure and recurrent lateral patellar instability. A femoral tunnel placed too far distally will have a similar clinical result because of excessive graft tension in extension rather than flexion⁶⁷. Radiographic guidelines developed by Schöttle et al.⁵⁹ and Stephen et al.⁵⁶ to aid in femoral fixation are depicted in Figure 5.

Additional factors for successful MPFL reconstruction are appropriate graft length and tension. The concept of graft isometry in MPFL reconstruction has been studied with varying conclusions^{55,64,66-68}. Thaanat and Erasmus⁶⁷ introduced the concept of so-called favorable MPFL anisometry, or graft isometry from 0° to 30° of knee flexion, a range that is isometric in the native MPFL. This concept advocates for an MPFL graft that more closely recapitulates the native MPFL function by protecting against lateral patellar dislocation in extension where the graft is isometric and under tension. Graft tension can be measured intraoperatively; however, a more practical measure of graft tension is a comparison with the contralateral knee. Additionally, Koh and Stewart⁴⁸ suggested that the reconstruction should permit 1 cm of lateral translation in full extension or the equivalent of two quadrants of lateral deviation with a firm end point.

Several studies have demonstrated that MPFL reconstruction, specifically the placement of a femoral tunnel, is safe in a skeletally immature individual^{59,69-72}. However, care must be taken not to disrupt the physis or perichondral ring with femoral tunnel or socket drilling⁷³. If drilling cannot be accomplished safely, a slightly less anatomic MPFL reconstruction can be performed without drilling^{74,75}. Suture anchors may be used rather than bone tunnels or sockets if there is concern for a potential physal injury

or iatrogenic fracture^{76,77}. Nonanatomic distal realignment procedures have been described for skeletally immature patients with recurrent lateral patellar dislocation⁷⁸⁻⁸². Despite success rates of >80%^{78,81}, the current trend in the treatment of recurrent patellar dislocation in skeletally immature patients is toward more anatomic procedures to minimize the risk of graft stretching and subsequent revision procedures after skeletal maturity^{4,45,83-86}.

A recent systematic review noted an overall complication rate of 26.1% in patients from six to fifty-five years old (average, twenty-four years). The most common adverse events included recurrent apprehension, arthrofibrosis, pain and clinical failure, and patellar fracture⁵⁴. The complication rate may be lowered with appropriate postoperative rehabilitation, including cryotherapy to remove joint effusion, early mobilization to restore full range of motion, and progressive strengthening to prevent recurrent instability. Despite the numerous associated complications, most clinical studies have described retrospective data with 80% to 96% of the patients having a good or excellent clinical outcome^{65,67,87-98}. MPFL reconstruction, alone or in combination, has demonstrated effectiveness following failed surgery for instability⁹², and can provide stability and improved outcomes even in the presence of an increased TT-TG distance. No absolute cutoff value warranting an associated distal realignment procedure has been defined^{99,100}, so an increased TT-TG distance (>15 mm) may not be an absolute indication for medialization of the tibial tubercle during MPFL reconstruction^{101,102}.

Trochleoplasty

A renewed interest in trochleoplasty has occurred in response to the finding that 85% of individuals with recurrent patellofemoral instability have trochlear dysplasia²⁵. Indications for trochleoplasty, which are being refined, include aberrant patellar tracking (identified by a J sign on clinical examination and a TT-TG distance of >10 mm²¹) and abnormal trochlear

morphology (identified on a true lateral radiograph as overlap of the posterior condyles or on an axial MRI or CT scan¹⁰³). To consider undertaking a trochleoplasty, the patient should have normal or nearly normal trochlear articular cartilage and have already undergone correction of any rotational malalignment. Several different trochleoplasty procedures have been described, but all are technically demanding¹⁰⁴⁻¹⁰⁶. The technical considerations for a deepening trochleoplasty include elevating a strip of cortical bone adjacent to the trochlea in order to remove underlying cancellous trochlear bone, thus deepening the trochlear groove, before reapproximating the overlying healthy bone and cartilage^{107,108}. Schöttle et al.¹⁰⁹ examined the effect of raising an articular cartilage flap in a series of patients. The trochlear articular cartilage was examined using confocal microscopy and histologic evaluation at three, six, and nine months, and the authors concluded that, in a safely performed trochleoplasty, the articular cartilage remained viable in the short term. Further investigation is still warranted, given the cellular changes noted in the calcified cartilage layer¹⁰⁹. The proximal resection or groove-deepening trochleoplasties have less risk of iatrogenic articular cartilage damage; however, they innately confer less stability¹⁰⁵.

Both surgeon and patient should be aware of the reported postoperative complications following trochleoplasty, and those specific to the procedure include iatrogenic cartilage damage, patellar incongruence, overcorrection, arthrofibrosis, and advanced arthrosis^{103-105,110,111}. Given the technical demands and potential complications, it is not surprising that the clinical outcomes following trochleoplasty for recurrent instability are mixed, with satisfaction ratings ranging from 67% to 95.7%^{103,106-108,112-116}. Currently, trochleoplasty should be reserved for surgeons with vast experience with these techniques and for patients with recurrent and complex patellofemoral instability.

Tibial Tubercle Transfer

The objectives of osseous distal realignment are to address the primary pathology, recurrent instability, which may be associated with patella alta and abnormal patellar tracking secondary to external tibial torsion relative to the trochlear groove. Medial tibial tubercle transfer (Elmslie-Trillat procedure)¹¹⁷ and anteromedialization of the tibial tubercle (Fulkerson procedure)^{118,119} have been described to meet these objectives in the setting of recurrent patellar instability^{25,120-125}. The selected plane of the osteotomy needs to be individualized for each patient. A modified Elmslie-Trillat procedure in a 15° to 20° plane that medializes and corrects malrotation may be the most frequently used approach for patients with typical recurrent instability (Fig. 6)¹²⁶⁻¹²⁸.

The indications for a distal realignment in the setting of recurrent instability include a TT-TG distance of >15 mm and a Caton-Deschamps ratio of >1.4¹²⁹⁻¹³¹. Skeletal immaturity with an open tibial apophysis is a strict contraindication, given the risk of growth arrest and recurvatum deformity, and typically is not advised for patients younger than fourteen years^{84,120,132}. A history of medial dislocations and patellofemoral arthrosis of the proximal and medial facets are relative contraindications. Chondrosis in these areas was more predictive of a poor outcome than the overall degree of arthrosis¹²⁴.

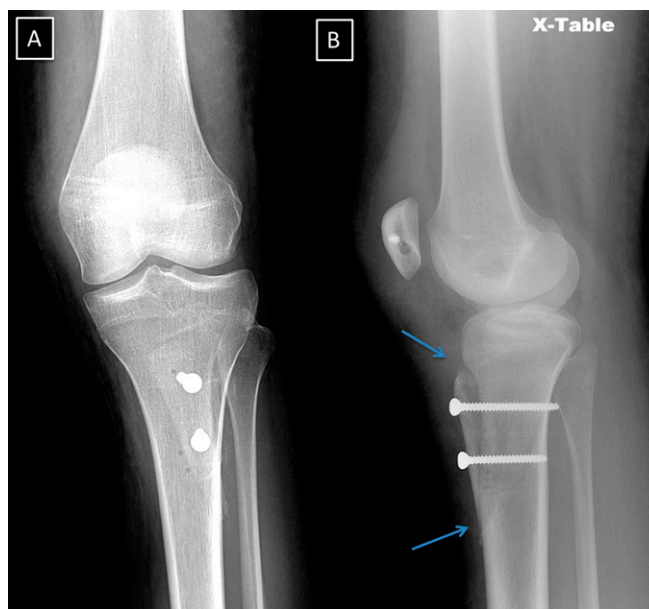


Fig. 6

Figs. 6-A and 6-B Tibial tubercle transfer technique. **Fig. 6-A** A long (>5 cm) and thick (>0.75 cm) osteotomy is performed to accommodate fixation with two screws. **Fig. 6-B** The obliquity of the osteotomy (blue arrows) is customized to address multiplanar malalignment; however, the osteotomy should be made in only one plane to avoid step-cuts, notching, and ultimately fracture propagation.

Isolated medialization of the tibial tubercle decreases the resultant lateral force vector acting on the patella and consequently increases patellofemoral stability. The preferred magnitude of medialization varies; however, the majority of researchers agree that postoperative TT-TG goals should be 9 to 15 mm^{21,40,133,134}. To assess the adequacy of correction intraoperatively, the knee may be passively moved through a range of motion without signs of subluxation or dislocation. Care should be taken to ensure osseous contact between the osteotomized tibial tubercle and the triangular morphology of the proximal part of the tibia. Direct medialization has provided good-to-excellent patient-reported outcomes, with low rates of postoperative dislocation for patients with recurrent dislocation^{120,135}. One concern with isolated medialization is overconstraining the patellofemoral joint, leading to patellofemoral arthrosis and subsequent long-term pain¹²².

Modification to the initial uniplanar tibial tubercle transfers is the basis for anteromedialization, which combines the positive effects of the isolated medial and anterior transfers while minimizing the shortcomings¹¹⁸. A long osteotomy is performed to maximize the surface area and provide sufficient length for safe fixation with a minimum of two screws to control both rotation and translation (Fig. 6-A). The obliquity of the osteotomy is also customized to address the individual deformity, such that the degree of obliquity balances correction of the malrotation against the potential impacts of patellofemoral contact mechanics and chondral surfaces (Fig. 6-B)¹¹⁴. In cases of excessive external tibial torsion, a proximal tibial derotational osteotomy may be considered^{99,100}. Osteotomies can be combined with MPFL reconstruction,

TABLE 1 Grades of Recommendations for the Treatment of Recurrent Patellar Instability

Condition*	Treatment*	Grade of Recommendation†
MPFL injury	MPFL reconstruction	C
Trochlear dysplasia	Trochleoplasty	C
Elevated TT-TG distance	Tibial tubercle realignment	C
Patella alta	Tibial tubercle realignment	C
Excessive femoral antetorsion (anteversion)	Femoral derotational osteotomy	C

*MPFL = medial patellofemoral ligament, and TT-TG = tibial tubercle-trochlear groove. †According to Wright et al.¹⁵⁴, grade A indicates good evidence for or against recommending an intervention (Level-I studies with consistent findings); grade B, fair evidence for or against recommending an intervention (Level-II or III studies with consistent findings); grade C, poor evidence for or against recommending an intervention (Level-IV or V studies with consistent findings); and grade I, insufficient or conflicting evidence not allowing a recommendation for or against intervention.

trochleoplasty, or lateral retinacular release as well as cartilage restoration procedures in cases of full-thickness defects, depending on the individual needs of the patient^{99,100,136}.

The overall complication rate following osseous distal realignment procedures has been reported to be 7.4%¹³³. The majority of patients have symptomatic hardware, with $\geq 50\%$ requiring hardware removal^{137,138}. Fracture of the proximal part of the tibia, with a reported rate of 1% to 2.6%^{133,139}, may be prevented by ensuring that the osteotomy is at least 5 cm long by 0.75 cm thick and by avoiding step-cuts (Fig. 6-B)¹³⁷. Isolating the clinical outcomes of distal realignment is difficult because most studies have experimental cohorts with patients who have multiple contributory factors for patellar instability and combined indications for tibial tubercle transfer. Concomitant procedures such as lateral release, MPFL reconstruction, and trochleoplasty are common^{9,47,120,134,137,138,140,141}. Despite the limitations of the current literature, distal realignment procedures do result in low redislocation rates (0% to 15.2%) when performed for recurrent patellar instability^{9,120,134,137,138}. Patient satisfaction following distal realignment was rated as good or excellent for 63% to 90% of patients^{9,47,141}.

Femoral Derotational Osteotomy

In addition to distal realignment procedures for a tibia-based deformity, unrecognized excessive femoral anteversion alters the forces across the patellofemoral joint, with a greater laterally directed force vector^{142,143}. Such anteversion has been implicated in patellofemoral pain and recurrent patellar instability^{52,144-146}. Investigators have described unrecognized excessive femoral anteversion as a cause of recurrent patellar instability and the etiology of the failure of initial instability treatment^{25,54,146,147}. If rotational malalignment is suspected, advanced imaging with CT or MRI should be performed to quantify the deformity. Derotational osteotomy for excessive femoral anteversion (an anteversion of $>20^\circ$) should be performed in patients with failed soft-tissue procedures or if all contributing osseous and soft-tissue factors are to be addressed concomitantly^{136,146,148}. The osteotomy, if performed, should be done as close to the deformity as possible. It may be done proximally in the intertrochanteric region or distally in the supracondylar region; both options yield good-to-excellent results^{148,149}.

Algorithmic Approach with Graded Recommendations

The diagnostic pathway and treatment algorithm of our senior author (A.B.) does not advocate for a single treatment but rather provides a framework to ensure that important contributory factors are considered and potentially addressed (Fig. 1).

If nonoperative measures fail following a completed course of physical therapy and lateral patellar instability recurs, the surgical treatment is customized to the constellation and severity of soft-tissue and osseous pathoanatomy. In a skeletally immature patient (who is more than eight years old), coronal alignment should be assessed. If there is genu valgum of $>10^\circ$ with more than twelve months of growth anticipated, we perform guided growth with a tension-band plate across the distal femoral medial physis. If coronal alignment is adequate, excessive femoral anteversion may be addressed through derotational osteotomy. If both coronal alignment and femoral version are normal and the MPFL is injured, we advocate for an anatomic MPFL reconstruction. A lateral release may be indicated if patellar tilt is $>20^\circ$ and the patella cannot be everted to neutral on examination. If anatomic MPFL reconstruction may cause physeal injury, then a nonanatomic stabilization procedure should be performed.

In skeletally mature patients with recurrent lateral instability, we use the initial examination, radiographs, and advanced imaging to delineate patella alta, trochlear dysplasia, the TT-TG distance, patellar tilt, evidence of loose bodies or chondral damage, the integrity of the MPFL, and the location and/or severity of patellofemoral arthritic change. Our algorithmic approach is based on principles learned from the Lyon criteria¹⁵⁰ and the excellent work by Walch and Dejour¹⁵¹, which considered systematically addressing the anatomy, including trochlear dysplasia, patella alta, patellar tilt, and increased TT-TG distance. Additionally, we advocate for an anatomic MPFL reconstruction in the setting of a disrupted ligament. If the patient has a substantially increased TT-TG distance secondary to external tibial torsion and/or patella alta, we combine the MPFL reconstruction with a distal realignment procedure. The osteotomy obliquity and need for distalization is customized and precisely defined on the basis of the severity of malrotation and patella alta and on an assessment of lateral and/or distal patellar facet chondrosis. A tibial tubercle transfer is not performed with the MPFL reconstruction in patients with patellar

chondrosis of the medial facet or proximal pole because of the risk of compression overload. If there is Dejour type-B or type-D trochlear dysplasia, a groove-deepening trochleoplasty can be performed concomitantly. Dejour type-C trochlear dysplasia may warrant a lateral facet elevation, proximal recession wedge trochleoplasty, or groove-deepening trochleoplasty, although the literature is mixed and there is a lack of definitive evidence¹⁰¹⁻¹¹⁴. With all procedures, a lateral release can be added as a concomitant procedure in patients with radiographic patellar tilt of $>20^\circ$ with associated lack of eversion to neutral on examination. Excessive femoral anteversion should always be considered in patients with recurrent patellar instability, and a proximal, distal, or midshaft femoral derotational osteotomy (using an intramedullary saw and locked intramedullary nail fixation) and concomitant realignment should be performed. Lastly, in patients who have had failure after surgery for recurrent instability, both residual anatomic abnormalities and technical errors should be assessed and corrected.

The majority of investigators have recommended that recurrent lateral patellar instability should be addressed surgically^{4,44-47,64,66,78,83,86-97,107,112,131,139}; however, there is no clear consensus on a consistent surgical algorithm. Furthermore, the available data are largely Level IV, with only a few recent Level-II and III studies^{88,92,152,153}. As such, these recommendations for recurrent lateral patellar instability are graded C (Table I). Future investigations into recurrent patellar instability will benefit from prospectively collected, multicenter registry data with a coordinated effort toward uniform outcome measures and randomized clinical studies. It is only through multicenter

prospective studies with a large sample size and uniform outcome measures, and thus a higher level of evidence, that treatment answers will be provided for patients with recurrent patellar instability. ■

Alexander E. Weber, MD¹
Amit Nathani, MD¹
Joshua S. Dines, MD^{2,3}
Answorth A. Allen, MD²
Beth E. Shubin-Stein, MD²
Elizabeth A. Arendt, MD⁴
Asheesh Bedi, MD¹

¹Sports Medicine and Shoulder Service,
MedSport, Department of Orthopaedic Surgery,
University of Michigan,
Ann Arbor, Michigan

²Hospital for Special Surgery,
New York, New York

³Long Island Jewish Medical Center,
New Hyde Park, New York

⁴Department of Orthopaedic Surgery,
University of Minnesota,
Minneapolis, Minnesota

E-mail address for A. Bedi: abedi@med.umich.edu

References

- Fithian DC, Paxton EW, Stone ML, Silva P, Davis DK, Elias DA, White LM. Epidemiology and natural history of acute patellar dislocation. *Am J Sports Med.* 2004 Jul-Aug;32(5):1114-21. Epub 2004 May 18.
- Hawkins RJ, Bell RH, Anisette G. Acute patellar dislocations. The natural history. *Am J Sports Med.* 1986 Mar-Apr;14(2):117-20.
- Hsiao M, Owens BD, Burks R, Sturdivant RX, Cameron KL. Incidence of acute traumatic patellar dislocation among active-duty United States military service members. *Am J Sports Med.* 2010 Oct;38(10):1997-2004. Epub 2010 Jul 8.
- Arendt EA, Fithian DC, Cohen E. Current concepts of lateral patella dislocation. *Clin Sports Med.* 2002 Jul;21(3):499-519.
- Frandsen PA, Kristensen H. Osteochondral fracture associated with dislocation of the patella: another mechanism of injury. *J Trauma.* 1979 Mar;19(3):195-7.
- Larsen E, Lauridsen F. Conservative treatment of patellar dislocations. Influence of evident factors on the tendency to redislocation and the therapeutic result. *Clin Orthop Relat Res.* 1982 Nov-Dec;171:131-6.
- Mäenpää H, Lehto MU. Patellar dislocation. The long-term results of nonoperative management in 100 patients. *Am J Sports Med.* 1997 Mar-Apr;25(2):213-7.
- Seeley M, Bowman KF, Walsh C, Sabb BJ, Vanderhave KL. Magnetic resonance imaging of acute patellar dislocation in children: patterns of injury and risk factors for recurrence. *J Pediatr Orthop.* 2012 Mar;32(2):145-55.
- Garth WP Jr, DiChristina DG, Holt G. Delayed proximal repair and distal realignment after patellar dislocation. *Clin Orthop Relat Res.* 2000 Aug;377:132-44.
- Palmu S, Kallio PE, Donell ST, Helenius I, Nietosvaara Y. Acute patellar dislocation in children and adolescents: a randomized clinical trial. *J Bone Joint Surg Am.* 2008 Mar;90(3):463-70.
- Beighton P, Solomon L, Soskolne CL. Articular mobility in an African population. *Ann Rheum Dis.* 1973 Sep;32(5):413-8.
- James SL, Bates BT, Osternig LR. Injuries to runners. *Am J Sports Med.* 1978 Mar-Apr;6(2):40-50.
- Zeller BL, McCrory JL, Kibler WB, Uhl TL. Differences in kinematics and electromyographic activity between men and women during the single-legged squat. *Am J Sports Med.* 2003 May-Jun;31(3):449-56.
- Lester JD, Watson JN, Hutchinson MR. Physical examination of the patellofemoral joint. *Clin Sports Med.* 2014 Jul;33(3):403-12. Epub 2014 Apr 18.
- Bassett FH. Acute dislocation of the patella, osteochondral fractures, and injuries to the extensor mechanism of the knee. In: Burke E, editor. *Amer Acad Orth Surg Instructional Course Lectures.* St. Louis: C.V. Mosby; 1976. p 40-9.
- Smith TO, Davies L, O'Driscoll ML, Donell ST. An evaluation of the clinical tests and outcome measures used to assess patellar instability. *Knee.* 2008 Aug;15(4):255-62. Epub 2008 Mar 7.
- Post WR. Clinical evaluation of patients with patellofemoral disorders. *Arthroscopy.* 1999 Nov-Dec;15(8):841-51.
- Ahmad CS, McCarthy M, Gomez JA, Shubin Stein BE. The moving patellar apprehension test for lateral patellar instability. *Am J Sports Med.* 2009 Apr;37(4):791-6. Epub 2009 Feb 3.
- Merchant AC. Patellofemoral imaging. *Clin Orthop Relat Res.* 2001 Aug;389:15-21.
- Caton J. [Method of measuring the height of the patella]. *Acta Orthop Belg.* 1989;55(3):385-6. French.
- Dejour D, Le Coultre B. Osteotomies in patello-femoral instabilities. *Sports Med Arthrosc.* 2007 Mar;15(1):39-46.
- Rémy F, Chantelot C, Fontaine C, Demondion X, Migaud H, Gougeon F. Inter- and intraobserver reproducibility in radiographic diagnosis and classification of femoral trochlear dysplasia. *Surg Radiol Anat.* 1998;20(4):285-9.
- Merchant AC, Mercer RL, Jacobsen RH, Cool CR. Roentgenographic analysis of patellofemoral congruence. *J Bone Joint Surg Am.* 1974 Oct;56(7):1391-6.
- Seeley MA, Knesek M, Vanderhave KL. Osteochondral injury after acute patellar dislocation in children and adolescents. *J Pediatr Orthop.* 2013 Jul-Aug;33(5):511-8.
- Dejour H, Walch G, Nove-Josserand L, Guier C. Factors of patellar instability: an anatomic radiographic study. *Knee Surg Sports Traumatol Arthrosc.* 1994;2(1):19-26.
- Dickens AJ, Morrell NT, Doering A, Tandberg D, Treme G. Tibial tubercle-trochlear groove distance: defining normal in a pediatric population. *J Bone Joint Surg Am.* 2014 Feb 19;96(4):318-24.
- Schoettle PB, Zanetti M, Seifert B, Pfirrmann CW, Fucentese SF, Romero J. The tibial tuberosity-trochlear groove distance; a comparative study between CT and MRI scanning. *Knee.* 2006 Jan;13(1):26-31. Epub 2005 Jul 14.

28. Rhee SJ, Pavlou G, Oakley J, Barlow D, Haddad F. Modern management of patellar instability. *Int Orthop*. 2012 Dec;36(12):2447-56. Epub 2012 Oct 7.
29. Sanders TG, Morrison WB, Singleton BA, Miller MD, Cornum KG. Medial patellofemoral ligament injury following acute transient dislocation of the patella: MR findings with surgical correlation in 14 patients. *J Comput Assist Tomogr*. 2001 Nov-Dec;25(6):957-62.
30. Elias DA, White LM, Fithian DC. Acute lateral patellar dislocation at MR imaging: injury patterns of medial patellar soft-tissue restraints and osteochondral injuries of the inferomedial patella. *Radiology*. 2002 Dec;225(3):736-43.
31. Nomura E, Horiuchi Y, Inoue M. Correlation of MR imaging findings and open exploration of medial patellofemoral ligament injuries in acute patellar dislocations. *Knee*. 2002 May;9(2):139-43.
32. Balcarek P, Ammon J, Frosch S, Walde TA, Schütttrumpf JP, Ferlemann KG, Lill H, Stürmer KM, Frosch KH. Magnetic resonance imaging characteristics of the medial patellofemoral ligament lesion in acute lateral patellar dislocations considering trochlear dysplasia, patella alta, and tibial tuberosity-trochlear groove distance. *Arthroscopy*. 2010 Jul;26(7):926-35. Epub 2010 Mar 3.
33. Kirsch MD, Fitzgerald SW, Friedman H, Rogers LF. Transient lateral patellar dislocation: diagnosis with MR imaging. *AJR Am J Roentgenol*. 1993 Jul;161(1):109-13.
34. Stanitski CL, Paletta GA Jr. Articular cartilage injury with acute patellar dislocation in adolescents. *Arthroscopic and radiographic correlation*. *Am J Sports Med*. 1998 Jan-Feb;26(1):52-5.
35. Nomura E, Inoue M. Second-look arthroscopy of cartilage changes of the patellofemoral joint, especially the patella, following acute and recurrent patellar dislocation. *Osteoarthritis Cartilage*. 2005 Nov;13(11):1029-36. Epub 2005 Sep 9.
36. Weber-Spickschen TS, Spang J, Kohn L, Imhoff AB, Schottle PB. The relationship between trochlear dysplasia and medial patellofemoral ligament rupture location after patellar dislocation: an MRI evaluation. *Knee*. 2011 Jun;18(3):185-8. Epub 2010 May 21.
37. Nomura E, Inoue M. Cartilage lesions of the patella in recurrent patellar dislocation. *Am J Sports Med*. 2004 Mar;32(2):498-502.
38. Biedert RM, Albrecht S. The patello-trochlear index: a new index for assessing patellar height. *Knee Surg Sports Traumatol Arthrosc*. 2006 Aug;14(8):707-12. Epub 2006 Feb 23.
39. Barnett AJ, Prentice M, Mandalia V, Wakeley CJ, Eldridge JD. Patellar height measurement in trochlear dysplasia. *Knee Surg Sports Traumatol Arthrosc*. 2009 Dec;17(12):1412-5. Epub 2009 May 7.
40. Camp CL, Stuart MJ, Krych AJ, Levy BA, Bond JR, Collins MS, Dahm DL. CT and MRI measurements of tibial tubercle-trochlear groove distances are not equivalent in patients with patellar instability. *Am J Sports Med*. 2013 Aug;41(8):1835-40. Epub 2013 Jul 15.
41. Lippacher S, Dejour D, Elsharkawi M, Dornacher D, Ring C, Dreyhaupt J, Reichel H, Nelitz M. Observer agreement on the Dejour trochlear dysplasia classification: a comparison of true lateral radiographs and axial magnetic resonance images. *Am J Sports Med*. 2012 Apr;40(4):837-43. Epub 2012 Jan 11.
42. Nelitz M, Lippacher S, Reichel H, Dornacher D. Evaluation of trochlear dysplasia using MRI: correlation between the classification system of Dejour and objective parameters of trochlear dysplasia. *Knee Surg Sports Traumatol Arthrosc*. 2014 Jan;22(1):120-7. Epub 2012 Nov 30.
43. Lee SE, Cho SH. The effect of McConnell taping on vastus medialis and lateralis activity during squatting in adults with patellofemoral pain syndrome. *J Exerc Rehabil*. 2013 Apr;9(2):326-30. Epub 2013 Apr 25.
44. McConnell J. Rehabilitation and nonoperative treatment of patellar instability. *Sports Med Arthrosc*. 2007 Jun;15(2):95-104.
45. Colvin AC, West RV. Patellar instability. *J Bone Joint Surg Am*. 2008 Dec;90(12):2751-62.
46. Khorrae S, Kramer DE, Yen YM, Heyworth BE. Evaluation and management of patellar instability in pediatric and adolescent athletes. *Sports Health*. 2015 Mar;7(2):115-23.
47. Cootjans K, Dujardin J, Vandenneucker H, Bellemans J. A surgical algorithm for the treatment of recurrent patellar dislocation. Results at 5 year follow-up. *Acta Orthop Belg*. 2013 Jun;79(3):318-25.
48. Koh JL, Stewart C. Patellar instability. *Clin Sports Med*. 2014 Jul;33(3):461-76. Epub 2014 May 29.
49. Stefanin JJ, Parker RD. First-time traumatic patellar dislocation: a systematic review. *Clin Orthop Relat Res*. 2007 Feb;455:93-101.
50. Atkin DM, Fithian DC, Marangi KS, Stone ML, Dobson BE, Mendelsohn C. Characteristics of patients with primary acute lateral patellar dislocation and their recovery within the first 6 months of injury. *Am J Sports Med*. 2000 Jul-Aug;28(4):472-9.
51. Conlan T, Garth WP Jr, Lemons JE. Evaluation of the medial soft-tissue restraints of the extensor mechanism of the knee. *J Bone Joint Surg Am*. 1993 May;75(5):682-93.
52. Desio SM, Burks RT, Bachus KN. Soft tissue restraints to lateral patellar translation in the human knee. *Am J Sports Med*. 1998 Jan-Feb;26(1):59-65.
53. Hautamaa PV, Fithian DC, Kaufman KR, Daniel DM, Pohlmeier AM. Medial soft tissue restraints in lateral patellar instability and repair. *Clin Orthop Relat Res*. 1998 Apr;349:174-82.
54. Shah JN, Howard JS, Flanigan DC, Brophy RH, Carey JL, Lattermann C. A systematic review of complications and failures associated with medial patellofemoral ligament reconstruction for recurrent patellar dislocation. *Am J Sports Med*. 2012 Aug;40(8):1916-23. Epub 2012 Jun 7.
55. Steensen RN, Dopirak RM, McDonald WG 3rd. The anatomy and isometry of the medial patellofemoral ligament: implications for reconstruction. *Am J Sports Med*. 2004 Sep;32(6):1509-13. Epub 2004 Jul 20.
56. Stephen JM, Lumpaopong P, Deehan DJ, Kader D, Amis AA. The medial patellofemoral ligament: location of femoral attachment and length change patterns resulting from anatomic and nonanatomic attachments. *Am J Sports Med*. 2012 Aug;40(8):1871-9. Epub 2012 Jun 22.
57. Csintalan RP, Latt LD, Fornalski S, Raiszadeh K, Inacio MC, Fithian DC. Medial patellofemoral ligament (MPFL) reconstruction for the treatment of patellofemoral instability. *J Knee Surg*. 2014 Apr;27(2):139-46. Epub 2013 Nov 13.
58. Davis DK, Fithian DC. Techniques of medial retinacular repair and reconstruction. *Clin Orthop Relat Res*. 2002 Sep;402:38-52.
59. Schöttle PB, Schmeling A, Rosenstiel N, Weiler A. Radiographic landmarks for femoral tunnel placement in medial patellofemoral ligament reconstruction. *Am J Sports Med*. 2007 May;35(5):801-4. Epub 2007 Jan 31.
60. Beck P, Brown NA, Greis PE, Burks RT. Patellofemoral contact pressures and lateral patellar translation after medial patellofemoral ligament reconstruction. *Am J Sports Med*. 2007 Sep;35(9):1557-63. Epub 2007 Apr 13.
61. Bollier M, Fulkerson J, Cosgarea A, Tanaka M. Technical failure of medial patellofemoral ligament reconstruction. *Arthroscopy*. 2011 Aug;27(8):1153-9. Epub 2011 Jun 12.
62. Camp CL, Krych AJ, Dahm DL, Levy BA, Stuart MJ. Medial patellofemoral ligament repair for recurrent patellar dislocation. *Am J Sports Med*. 2010 Nov;38(11):2248-54. Epub 2010 Aug 17.
63. Elias JJ, Cosgarea AJ. Technical errors during medial patellofemoral ligament reconstruction could overload medial patellofemoral cartilage: a computational analysis. *Am J Sports Med*. 2006 Sep;34(9):1478-85. Epub 2006 May 9.
64. Smirk C, Morris H. The anatomy and reconstruction of the medial patellofemoral ligament. *Knee*. 2003 Sep;10(3):221-7.
65. Steiner TM, Torga-Spak R, Teitge RA. Medial patellofemoral ligament reconstruction in patients with lateral patellar instability and trochlear dysplasia. *Am J Sports Med*. 2006 Aug;34(8):1254-61. Epub 2006 Mar 27.
66. Stephen JM, Kaider D, Lumpaopong P, Deehan DJ, Amis AA. The effect of femoral tunnel position and graft tension on patellar contact mechanics and kinematics after medial patellofemoral ligament reconstruction. *Am J Sports Med*. 2014 Feb;42(2):364-72. Epub 2013 Nov 25.
67. Thauant M, Erasmus PJ. Management of overtight medial patellofemoral ligament reconstruction. *Knee Surg Sports Traumatol Arthrosc*. 2009 May;17(5):480-3. Epub 2009 Jan 9.
68. Parker DA, Alexander JW, Conditt MA, Uzodinma ON, Bryan WJ. Comparison of isometric and anatomic reconstruction of the medial patellofemoral ligament: a cadaveric study. *Orthopedics*. 2008 Apr;31(4):339-43.
69. Hennrikus W, Pylawka T. Patellofemoral instability in skeletally immature athletes. *J Bone Joint Surg Am*. 2013 Jan 16;95(2):176-83.
70. Kepler CK, Bogner EA, Hammoud S, Malcolmson G, Potter HG, Green DW. Zone of injury of the medial patellofemoral ligament after acute patellar dislocation in children and adolescents. *Am J Sports Med*. 2011 Jul;39(7):1444-9. Epub 2011 Mar 3.
71. Nelitz M, Dornacher D, Dreyhaupt J, Reichel H, Lippacher S. The relation of the distal femoral physis and the medial patellofemoral ligament. *Knee Surg Sports Traumatol Arthrosc*. 2011 Dec;19(12):2067-71. Epub 2011 May 19.
72. Vavken P, Wimmer MD, Camathias C, Quiddle J, Valderrabano V, Pagenstert G. Treating patella instability in skeletally immature patients. *Arthroscopy*. 2013 Aug;29(8):1410-22. Epub 2013 May 25.
73. Weeks KD 3rd, Fabricant PD, Ladenhauf HN, Green DW. Surgical options for patellar stabilization in the skeletally immature patient. *Sports Med Arthrosc*. 2012 Sep;20(3):194-202.
74. Noyes FR, Albright JC. Reconstruction of the medial patellofemoral ligament with autologous quadriceps tendon. *Arthroscopy*. 2006 Aug;22(8):904.e1-7.
75. Sillanpää PJ, Mäenpää HM, Mattila VM, Visuri T, Pihlajamäki H. A mini-invasive adductor magnus tendon transfer technique for medial patellofemoral ligament reconstruction: a technical note. *Knee Surg Sports Traumatol Arthrosc*. 2009 May;17(5):508-12. Epub 2009 Jan 23.
76. Anbari A, Cole BJ. Medial patellofemoral ligament reconstruction: a novel approach. *J Knee Surg*. 2008 Jul;21(3):241-5.
77. Song SY, Kim IS, Chang HG, Shin JH, Kim HJ, Seo YJ. Anatomic medial patellofemoral ligament reconstruction using patellar suture anchor fixation for recurrent patellar instability. *Knee Surg Sports Traumatol Arthrosc*. 2014 Oct;22(10):2431-7. Epub 2013 Oct 24.
78. Baker RH, Carroll N, Dewar FP, Hall JE. The semitendinosus tenodesis for recurrent dislocation of the patella. *J Bone Joint Surg Br*. 1972 Feb;54(1):103-9.
79. Fondren FB, Goldner JL, Bassett FH 3rd. Recurrent dislocation of the patella treated by the modified Roux-Goldthwait procedure. A prospective study of forty-seven knees. *J Bone Joint Surg Am*. 1985 Sep;67(7):993-1005.

- 80.** Joo SY, Park KB, Kim BR, Park HW, Kim HW. The 'four-in-one' procedure for habitual dislocation of the patella in children: early results in patients with severe generalised ligamentous laxity and aplasia of the trochlear groove. *J Bone Joint Surg Br.* 2007 Dec;89(12):1645-9.
- 81.** Marsh JS, Daigneault JP, Sethi P, Polzhofer GK. Treatment of recurrent patellar instability with a modification of the Roux-Goldthwait technique. *J Pediatr Orthop.* 2006 Jul-Aug;26(4):461-5.
- 82.** Moyad TF, Blakemore L. Modified Galeazzi technique for recurrent patellar dislocation in children. *Orthopedics.* 2006 Apr;29(4):302-4.
- 83.** Bicos J, Fulkerson JP, Amis A. Current concepts review: the medial patellofemoral ligament. *Am J Sports Med.* 2007 Mar;35(3):484-92.
- 84.** Hinton RY, Sharma KM. Acute and recurrent patellar instability in the young athlete. *Orthop Clin North Am.* 2003 Jul;34(3):385-96.
- 85.** Philippot R, Chouteau J, Wegrzyn J, Testa R, Fessy MH, Moyer B. Medial patellofemoral ligament anatomy: implications for its surgical reconstruction. *Knee Surg Sports Traumatol Arthrosc.* 2009 May;17(5):475-9. Epub 2009 Feb 19.
- 86.** Schepsis AA, Rogers AJ. Medial patellofemoral ligament reconstruction: indications and technique. *Sports Med Arthrosc.* 2012 Sep;20(3):162-70.
- 87.** Deie M, Ochi M, Adachi N, Shibuya H, Nakamae A. Medial patellofemoral ligament reconstruction fixed with a cylindrical bone plug and a grafted semitendinosus tendon at the original femoral site for recurrent patellar dislocation. *Am J Sports Med.* 2011 Jan;39(1):140-5. Epub 2010 Oct 7.
- 88.** Deie M, Ochi M, Sumen Y, Adachi N, Kobayashi K, Yasumoto M. A long-term follow-up study after medial patellofemoral ligament reconstruction using the transferred semitendinosus tendon for patellar dislocation. *Knee Surg Sports Traumatol Arthrosc.* 2005 Oct;13(7):522-8. Epub 2005 Jun 21.
- 89.** Drez D Jr, Edwards TB, Williams CS. Results of medial patellofemoral ligament reconstruction in the treatment of patellar dislocation. *Arthroscopy.* 2001 Mar;17(3):298-306.
- 90.** Fernandez E, Sala D, Castejon M. Reconstruction of the medial patellofemoral ligament for patellar instability using a semitendinosus autograft. *Acta Orthop Belg.* 2005 Jun;71(3):303-8.
- 91.** Hinterwimmer S, Imhoff AB, Minzlaff P, Saier T, Rosenstiel N, Hawe W, Feucht MJ. Anatomical two-bundle medial patellofemoral ligament reconstruction with hardware-free patellar graft fixation: technical note and preliminary results. *Knee Surg Sports Traumatol Arthrosc.* 2013 Sep;21(9):2147-54. Epub 2013 Apr 11.
- 92.** Kohn LM, Meidinger G, Beitzel K, Banke JJ, Hensler D, Imhoff AB, Schöttle PB. Isolated and combined medial patellofemoral ligament reconstruction in revision surgery for patellofemoral instability: a prospective study. *Am J Sports Med.* 2013 Sep;41(9):2128-35. Epub 2013 Aug 7.
- 93.** Nomura E, Inoue M. Hybrid medial patellofemoral ligament reconstruction using the semitendinosus tendon for recurrent patellar dislocation: minimum 3 years' follow-up. *Arthroscopy.* 2006 Jul;22(7):787-93.
- 94.** Raghuveer RK, Mishra CB. Reconstruction of medial patellofemoral ligament for chronic patellar instability. *Indian J Orthop.* 2012 Jul;46(4):447-54.
- 95.** Schöttle PB, Fucentese SF, Romero J. Clinical and radiological outcome of medial patellofemoral ligament reconstruction with a semitendinosus autograft for patella instability. *Knee Surg Sports Traumatol Arthrosc.* 2005 Oct;13(7):516-21. Epub 2005 Jun 15.
- 96.** Slenker NR, Tucker BS, Pepe MD, Marchetto PA, Cohen SB. Short-/intermediate-term outcomes after medial patellofemoral ligament reconstruction in the treatment of chronic lateral patellofemoral instability. *Phys Sportsmed.* 2013 May;41(2):26-33.
- 97.** Toritsuka Y, Amano H, Mae T, Uchida R, Hamada M, Ohzono K, Shino K. Dual tunnel medial patellofemoral ligament reconstruction for patients with patellar dislocation using a semitendinosus tendon autograft. *Knee.* 2011 Aug;18(4):214-9. Epub 2010 Jun 1.
- 98.** Watanabe T, Muneta T, Ikeda H, Tateishi T, Sekiya I. Visual analog scale assessment after medial patellofemoral ligament reconstruction: with or without tibial tubercle transfer. *J Orthop Sci.* 2008 Jan;13(1):32-8. Epub 2008 Feb 16.
- 99.** Drexler M, Dwyer T, Dolkart O, Goldstein Y, Steinberg EL, Chakraverty R, Cameron JC. Tibial rotational osteotomy and distal tuberosity transfer for patella subluxation secondary to excessive external tibial torsion: surgical technique and clinical outcome. *Knee Surg Sports Traumatol Arthrosc.* 2014 Nov;22(11):2682-9. Epub 2013 Jun 6.
- 100.** Paulos L, Swanson SC, Stoddard GJ, Barber-Westin S. Surgical correction of limb malalignment for instability of the patella: a comparison of 2 techniques. *Am J Sports Med.* 2009 Jul;37(7):1288-300. Epub 2009 Jun 2.
- 101.** Matsushita T, Kuroda R, Oka S, Matsumoto T, Takayama K, Kurosaka M. Clinical outcomes of medial patellofemoral ligament reconstruction in patients with an increased tibial tuberosity-trochlear groove distance. *Knee Surg Sports Traumatol Arthrosc.* 2014 Oct;22(10):2438-44. Epub 2014 Mar 4.
- 102.** Nelitz M, Dreyhaupt J, Reichel H, Woelfle J, Lippacher S. Anatomic reconstruction of the medial patellofemoral ligament in children and adolescents with open growth plates: surgical technique and clinical outcome. *Am J Sports Med.* 2013 Jan;41(1):58-63. Epub 2012 Oct 30.
- 103.** Donell ST, Joseph G, Hing CB, Marshall TJ. Modified Dejour trochleoplasty for severe dysplasia: operative technique and early clinical results. *Knee.* 2006 Aug;13(4):266-73. Epub 2006 Apr 24.
- 104.** Dejour D, Saggin P. The sulcus deepening trochleoplasty-the Lyon's procedure. *Int Orthop.* 2010 Feb;34(2):311-6. Epub 2010 Jan 9.
- 105.** Duncan ST, Noehren BS, Lattermann C. The role of trochleoplasty in patellofemoral instability. *Sports Med Arthrosc.* 2012 Sep;20(3):171-80.
- 106.** Goutallier D, Raou D, Van Driessche S. [Retro-trochlear wedge reduction trochleoplasty for the treatment of painful patella syndrome with protruding trochlea. Technical note and early results]. *Rev Chir Orthop Reparatrice Appar Mot.* 2002 Nov;88(7):678-85. French.
- 107.** Schöttle PB, Fucentese SF, Pfirrmann C, Bereiter H, Romero J. Trochleoplasty for patellar instability due to trochlear dysplasia: a minimum 2-year clinical and radiological follow-up of 19 knees. *Acta Orthop.* 2005 Oct;76(5):693-8.
- 108.** von Knoch F, Böhm T, Bürgi ML, von Knoch M, Bereiter H. Trochleoplasty for recurrent patellar dislocation in association with trochlear dysplasia. A 4- to 14-year follow-up study. *J Bone Joint Surg Br.* 2006 Oct;88(10):1331-5.
- 109.** Schöttle PB, Schell H, Duda G, Weiler A. Cartilage viability after trochleoplasty. *Knee Surg Sports Traumatol Arthrosc.* 2007 Feb;15(2):161-7. Epub 2006 Sep 2.
- 110.** Faruqi S, Bollier M, Wolf B, Amendola N. Outcomes after trochleoplasty. *Iowa Orthop J.* 2012;32:196-206.
- 111.** LaPrade RF, Cram TR, James EW, Rasmussen MT. Trochlear dysplasia and the role of trochleoplasty. *Clin Sports Med.* 2014 Jul;33(3):531-45. Epub 2014 May 24.
- 112.** Dejour D, Byn P, Ntigiopoulos PG. The Lyon's sulcus-deepening trochleoplasty in previous unsuccessful patellofemoral surgery. *Int Orthop.* 2013 Mar;37(3):433-9. Epub 2012 Dec 30.
- 113.** Nelitz M, Dreyhaupt J, Lippacher S. Combined trochleoplasty and medial patellofemoral ligament reconstruction for recurrent patellar dislocations in severe trochlear dysplasia: a minimum 2-year follow-up study. *Am J Sports Med.* 2013 May;41(5):1005-12. Epub 2013 Mar 6.
- 114.** Ntigiopoulos PG, Byn P, Dejour D. Midterm results of comprehensive surgical reconstruction including sulcus-deepening trochleoplasty in recurrent patellar dislocations with high-grade trochlear dysplasia. *Am J Sports Med.* 2013 May;41(5):998-1004. Epub 2013 Apr 15.
- 115.** Thanaat M, Bessiere C, Pujol N, Boisrenoult P, Beauvais P. Recession wedge trochleoplasty as an additional procedure in the surgical treatment of patellar instability with major trochlear dysplasia: early results. *Orthop Traumatol Surg Res.* 2011 Dec;97(8):833-45. Epub 2011 Nov 22.
- 116.** Verdonk R, Jansegers E, Stuyts B. Trochleoplasty in dysplastic knee trochlea. *Knee Surg Sports Traumatol Arthrosc.* 2005 Oct;13(7):529-33. Epub 2005 Jan 11.
- 117.** Trillat A, Dejour H, Couette A. [Diagnosis and treatment of recurrent dislocations of the patella]. *Rev Chir Orthop Reparatrice Appar Mot.* 1964 Nov-Dec;50:813-24. French.
- 118.** Fulkerson JP. Anteromedialization of the tibial tuberosity for patellofemoral malalignment. *Clin Orthop Relat Res.* 1983 Jul-Aug;177:176-81.
- 119.** Fulkerson JP, Becker GJ, Meaney JA, Miranda M, Folcik MA. Anteromedial tibial tubercle transfer without bone graft. *Am J Sports Med.* 1990 Sep-Oct;18(5):490-6; discussion 496-7.
- 120.** Barber FA, McGarry JE. Elmslie-Trillat procedure for the treatment of recurrent patellar instability. *Arthroscopy.* 2008 Jan;24(1):77-81. Epub 2007 Nov 5.
- 121.** Diks MJ, Wymenga AB, Anderson PG. Patients with lateral tracking patella have better pain relief following CT-guided tuberosity transfer than patients with unstable patella. *Knee Surg Sports Traumatol Arthrosc.* 2003 Nov;11(6):384-8. Epub 2003 Sep 11.
- 122.** Nakagawa K, Wada Y, Minamide M, Tsuchiya A, Moriya H. Deterioration of long-term clinical results after the Elmslie-Trillat procedure for dislocation of the patella. *J Bone Joint Surg Br.* 2002 Aug;84(6):861-4.
- 123.** Palmer SH, Servant CT, Maguire J, Machan S, Parish EN, Cross MJ. Surgical reconstruction of severe patellofemoral maltracking. *Clin Orthop Relat Res.* 2004 Feb;419:144-8.
- 124.** Pidriano AJ, Weinstein RN, Buuck DA, Fulkerson JP. Correlation of patellar articular lesions with results from anteromedial tibial tubercle transfer. *Am J Sports Med.* 1997 Jul-Aug;25(4):533-7.
- 125.** Pritsch T, Haim A, Arbel R, Snir N, Shasha N, Dekel S. Tailored tibial tubercle transfer for patellofemoral malalignment: analysis of clinical outcomes. *Knee Surg Sports Traumatol Arthrosc.* 2007 Aug;15(8):994-1002. Epub 2007 Apr 12.
- 126.** Marcacci M, Zaffagnini S, Lo Presti M, Vascellari A, Iacono F, Russo A. Treatment of chronic patellar dislocation with a modified Elmslie-Trillat procedure. *Arch Orthop Trauma Surg.* 2004 May;124(4):250-7. Epub 2003 May 15.
- 127.** Rillmann P, Dutly A, Kieser C, Berbig R. Modified Elmslie-Trillat procedure for instability of the patella. *Knee Surg Sports Traumatol Arthrosc.* 1998;6(1):31-5.
- 128.** Shelbourne KD, Porter DA, Rozzi W. Use of a modified Elmslie-Trillat procedure to improve abnormal patellar congruence angle. *Am J Sports Med.* 1994 May-Jun;22(3):318-23.
- 129.** Caton JH, Dejour D. Tibial tubercle osteotomy in patello-femoral instability and in patellar height abnormality. *Int Orthop.* 2010 Feb;34(2):305-9. Epub 2010 Jan 12.

- 130.** Duchman K, Bollier M. Distal realignment: indications, technique, and results. *Clin Sports Med.* 2014 Jul;33(3):517-30. Epub 2014 May 20.
- 131.** Magnussen RA, De Simone V, Lustig S, Neyret P, Flanigan DC. Treatment of patella alta in patients with episodic patellar dislocation: a systematic review. *Knee Surg Sports Traumatol Arthrosc.* 2014 Oct;22(10):2545-50. Epub 2013 Feb 8.
- 132.** Harrison MH. The results of a realignment operation for recurrent dislocation of the patella. *J Bone Joint Surg Br.* 1955 Nov;37-B(4):559-67.
- 133.** Servien E, Verdonk PC, Neyret P. Tibial tuberosity transfer for episodic patellar dislocation. *Sports Med Arthrosc.* 2007 Jun;15(2):61-7.
- 134.** Tecklenburg K, Feller JA, Whitehead TS, Webster KE, Elzarka A. Outcome of surgery for recurrent patellar dislocation based on the distance of the tibial tuberosity to the trochlear groove. *J Bone Joint Surg Br.* 2010 Oct;92(10):1376-80.
- 135.** Carney JR, Mologne TS, Muldoon M, Cox JS. Long-term evaluation of the Roux-Elmslie-Trillat procedure for patellar instability: a 26-year follow-up. *Am J Sports Med.* 2005 Aug;33(8):1220-3. Epub 2005 Jul 6.
- 136.** Nelitz M, Dreyhaupt J, Williams SR, Dornacher D. Combined supracondylar femoral derotation osteotomy and patellofemoral ligament reconstruction for recurrent patellar dislocation and severe femoral anteversion syndrome: surgical technique and clinical outcome. *Int Orthop.* 2015 Jul 10. Epub 2015 Jul 10.
- 137.** Koëter S, Diks MJ, Anderson PG, Wymenga AB. A modified tibial tubercle osteotomy for patellar maltracking: results at two years. *J Bone Joint Surg Br.* 2007 Feb;89(2):180-5.
- 138.** Tjoumakaris FP, Forsythe B, Bradley JP. Patellofemoral instability in athletes: treatment via modified Fulkerson osteotomy and lateral release. *Am J Sports Med.* 2010 May;38(5):992-9. Epub 2010 Mar 8.
- 139.** Stetson WB, Friedman MJ, Fulkerson JP, Cheng M, Buuck D. Fracture of the proximal tibia with immediate weightbearing after a Fulkerson osteotomy. *Am J Sports Med.* 1997 Jul-Aug;25(4):570-4.
- 140.** Ambjörnsson A, Egund N, Rydliing O, Stockerup R, Ryd L. The natural history of recurrent dislocation of the patella. Long-term results of conservative and operative treatment. *J Bone Joint Surg Br.* 1992 Jan;74(1):140-2.
- 141.** Wang CJ, Chan YS, Chen HH, Wu ST. Factors affecting the outcome of distal realignment for patellofemoral disorders of the knee. *Knee.* 2005 Jun;12(3):195-200. Epub 2004 Oct 19.
- 142.** Lee TQ, Anzel SH, Bennett KA, Pang D, Kim WC. The influence of fixed rotational deformities of the femur on the patellofemoral contact pressures in human cadaver knees. *Clin Orthop Relat Res.* 1994 May;302:69-74.
- 143.** Staheli LT, Corbett M, Wyss C, King H. Lower-extremity rotational problems in children. Normal values to guide management. *J Bone Joint Surg Am.* 1985 Jan;67(1):39-47.
- 144.** Diederichs G, Köhlitz T, Kornaropoulos E, Heller MO, Vollnberg B, Scheffler S. Magnetic resonance imaging analysis of rotational alignment in patients with patellar dislocations. *Am J Sports Med.* 2013 Jan;41(1):51-7. Epub 2012 Nov 7.
- 145.** Eckhoff DG, Montgomery WK, Kilcoyne RF, Stamm ER. Femoral morphometry and anterior knee pain. *Clin Orthop Relat Res.* 1994 May;302:64-8.
- 146.** Nelitz M, Williams RS, Lippacher S, Reichel H, Dornacher D. Analysis of failure and clinical outcome after unsuccessful medial patellofemoral ligament reconstruction in young patients. *Int Orthop.* 2014 Nov;38(11):2265-72. Epub 2014 Jul 20.
- 147.** Parikh SN, Nathan ST, Wall EJ, Eismann EA. Complications of medial patellofemoral ligament reconstruction in young patients. *Am J Sports Med.* 2013 May;41(5):1030-8. Epub 2013 Mar 28.
- 148.** Leonardi F, Rivera F, Zorzan A, Ali SM. Bilateral double osteotomy in severe torsional malalignment syndrome: 16 years follow-up. *J Orthop Traumatol.* 2014 Jun;15(2):131-6. Epub 2013 Aug 29.
- 149.** Kay RM, Rethlefsen SA, Hale JM, Skaggs DL, Tolo VT. Comparison of proximal and distal rotational femoral osteotomy in children with cerebral palsy. *J Pediatr Orthop.* 2003 Mar-Apr;23(2):150-4.
- 150.** Fithian DC, Neyret P, Servien E. Patellar instability: the Lyon experience. *Tech Knee Surg.* 2007;6(2):112-23.
- 151.** Walch G, Dejour H. [Radiology in femoro-patellar pathology]. *Acta Orthop Belg.* 1989;55(3):371-80. French.
- 152.** Ma LF, Wang F, Chen BC, Wang CH, Zhou JW, Wang HY. Medial retinaculum plasty versus medial patellofemoral ligament reconstruction for recurrent patellar instability in adults: a randomized controlled trial. *Arthroscopy.* 2013 May;29(5):891-7.
- 153.** Howells NR, Barnett AJ, Ahearn N, Ansari A, Eldridge JD. Medial patellofemoral ligament reconstruction: a prospective outcome assessment of a large single centre series. *J Bone Joint Surg Br.* 2012 Sep;94(9):1202-8.
- 154.** Wright JG, Einhorn TA, Heckman JD. Grades of recommendation. *J Bone Joint Surg Am.* 2005 Sep;87(9):1909-10.

Update

This article was updated on May 11, 2016, because of a previous error. On page 421, in the legend for Figure 5-A, two of the lines identifying the Schöttle point were mislabeled. The sentence had previously read “The Schöttle point (star)⁵⁹ is 1 mm anterior to the tangent of the posterior femoral cortex (red line), 2.5 mm distal to the perpendicular of the superior border of the femoral condyle (white line), and immediately proximal to a perpendicular line from the superoposterior aspect of the Blumensaat line (blue line).” The sentence now reads “The Schöttle point (star)⁵⁹ is 1 mm anterior to the tangent of the posterior femoral cortex (red line), 2.5 mm distal to the perpendicular of the superior border of the femoral condyle (blue line), and immediately proximal to a perpendicular line from the superoposterior aspect of the Blumensaat line (white line).”

An erratum has been published: *J Bone Joint Surg Am.* 2016 June 15;98(12):e54.